

MONTHLY MEMBERSHIP PROGRESS REPORT

District 11 A2

Results as of: 5/31/2020

GMT:

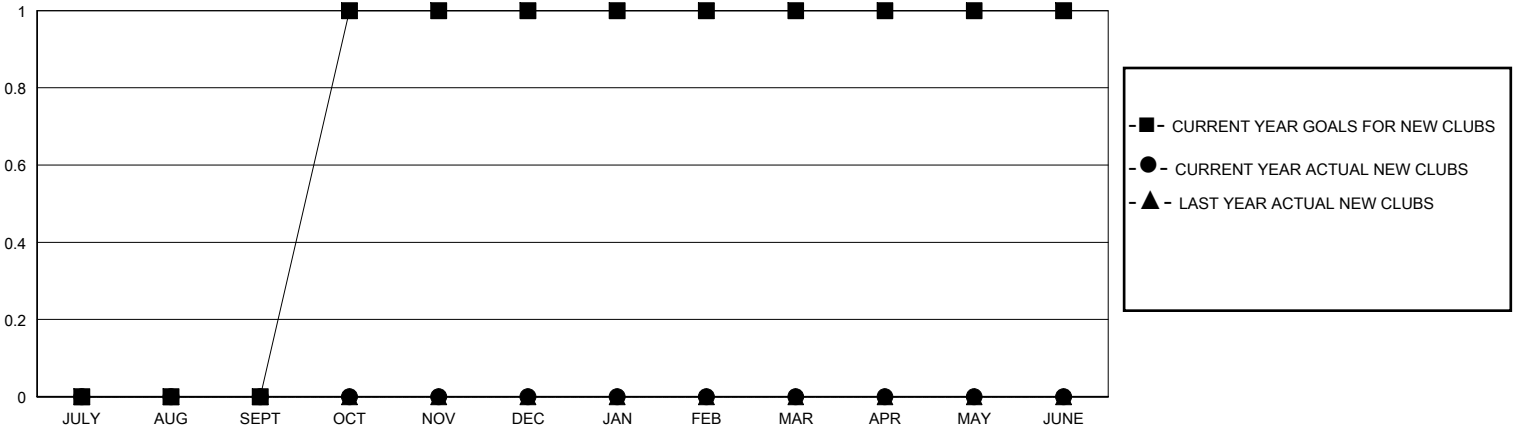
LOCATION MICHIGAN

GMT CA

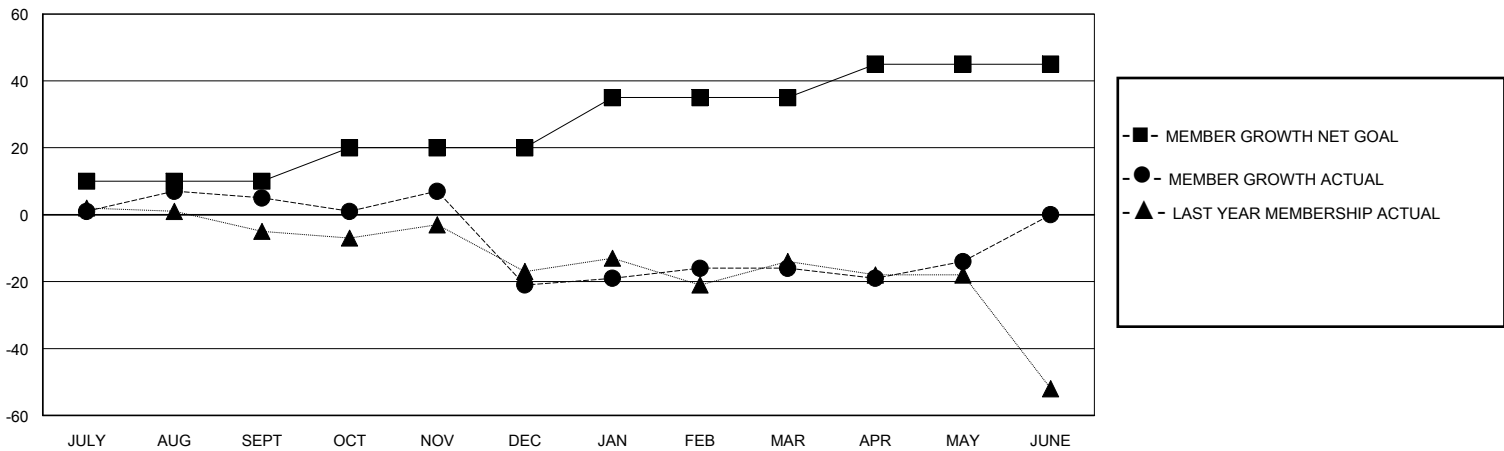
Clubs			
RESULTS FOR 2019-2020			
QUARTER	NEW CLUB GOAL	NEW CLUBS	DROPPED CLUBS
JULY/AUG/SEPT	0	0	0
OCT/NOV/DEC	1	0	2
JAN/FEB/MAR	0	0	0
APR/MAY/JUNE	0	0	0

Members			
RESULTS FOR 2019-2020			
QUARTER	MEMBER GROWTH NET GOAL	MEMBER GROWTH ACTUAL	DROPPED MEMBERS ACTUAL (including transfers)
JULY/AUG/SEPT	10	33	20
OCT/NOV/DEC	10	29	53
JAN/FEB/MAR	15	23	16
APR/MAY/JUNE	10	7	5

GOALS AND ACTUAL NEW CLUBS CUMULATIVE



GOALS AND ACTUAL MEMBERS CUMULATIVE



DROPPED CLUBS: 2

24 CLUBS OF 41 ADDED 1 OR MORE NEW MEMBERS

GENDER DISTRIBUTION

MALE 932 (69.97%)
FEMALE 400 (30.03%)

DROPPED MEMBERS

DECEASED	24
CLUB CANCELLED	19
OTHER	51
TOTAL	94

[CLICK HERE FOR CUMULATIVE MEMBERSHIP DATA](#)

TOTAL FAMILY UNIT MEMBERS	223
FAMILY MEMBERS PAYING HALF DUES	115